

SEGATM**SERVICE BULLETIN**

SEGA Service Department
45133 Industrial Drive
Fremont, Ca. 94538

Apr 17, 2001
<http://www.seuservice.com>
Phone: 415.701.6580
Fax: 415.701.6594

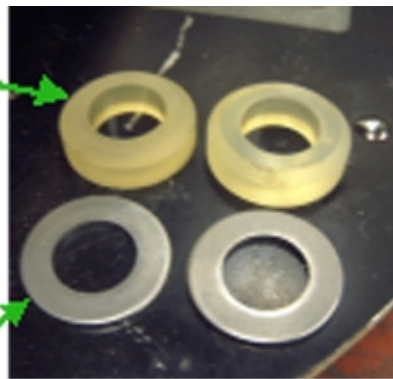
SPECIAL NOTICE FOR ALL AIR TRIX DLX

PROBLEM: Stoppers, over period of time, allow too much roll motion of skateboard causing damage to potentiometer.

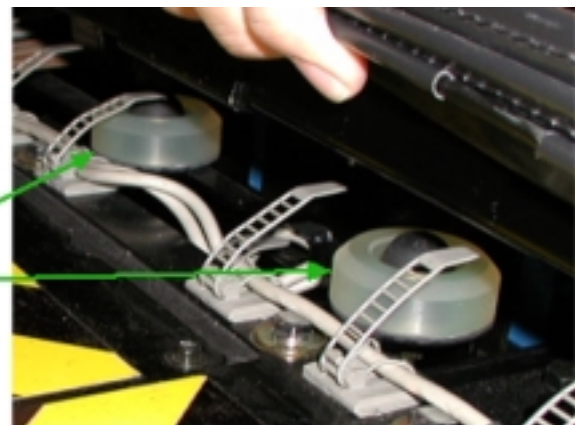
SOLUTION: Install Stopper Base ATR-3114 (4 pieces) and Sub Stopper ATR-3115 (4 pieces) to existing stoppers.(See Following Procedure)

Sub Stopper
ATR-3115

Stopper Base
ATR-3114



After Installation

**STOP**

IMPORTANT!

Not following the directions provided herein may cause your game to malfunction.
All electrical work should be performed by the site's Serviceman or Technician.

If you have any questions, please contact the SEGA Service Department at the numbers given above.

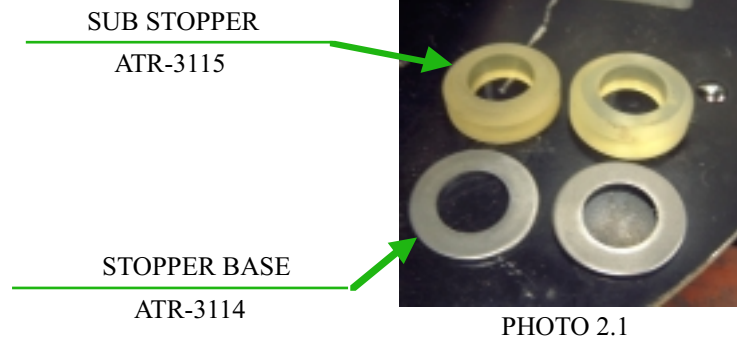
PARTS REPLACEMENT PROCEDURE FOR AIR TRIX

① Stopper reinforcement parts. (PHOTO 2.1)

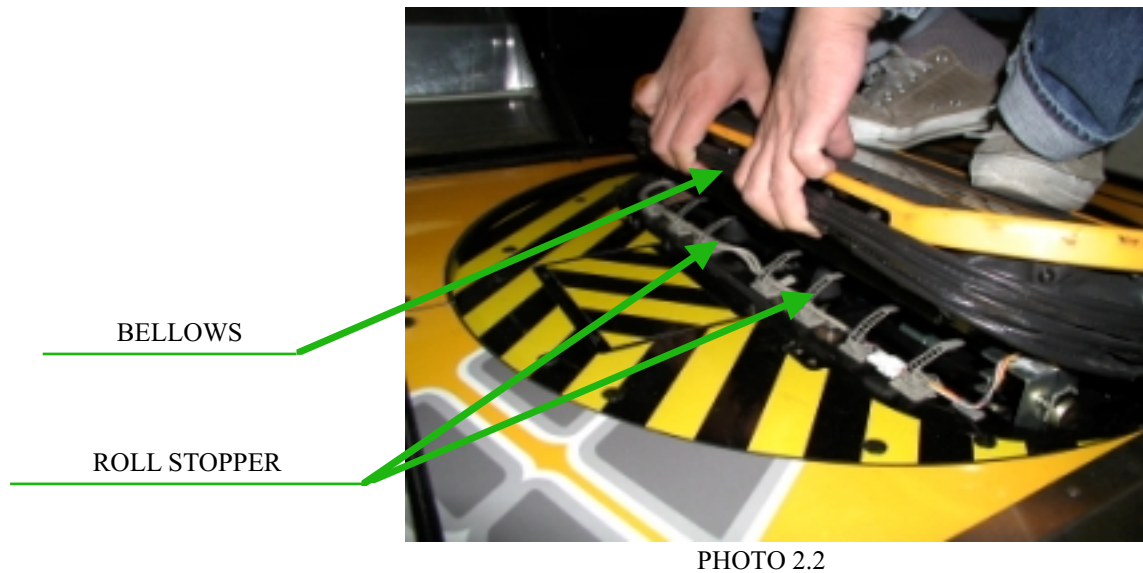
Install these 2 parts. (SUPPLIED)

STOPPER BASE	ATR-3114	4 pieces
SUB STOPPER	ATR-3115	4 pieces

(USE RTV SILICONE TO SECURE PARTS)



② Remove the screws securing the base of bellows. Then tilt the board up, pulling up the bellows as pictured. (PHOTO 2.2)



- ③ Secure the stopper base onto stopper with a small amount of silicone as pictured. (PHOTO 2.3)

STOPPER BASE
ATR-3114

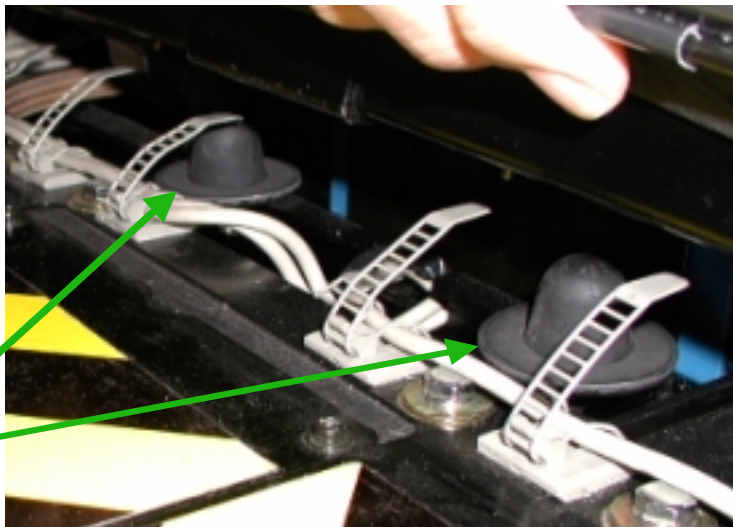


PHOTO 2.3

- ④ Secure the SUB STOPPER onto the STOPPER BASE with a small amount of silicone, assure chamfer faces up as shown. (PHOTO 2.4)

SUB STOPPER
ATR-3115

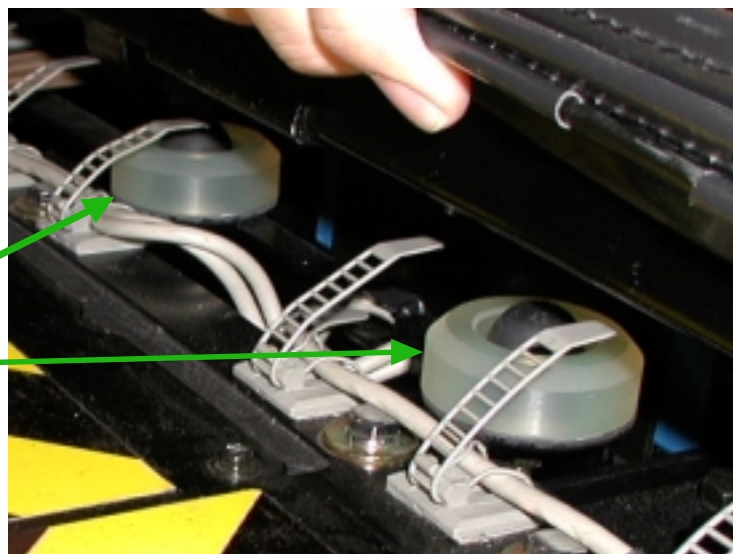


PHOTO 2.4

⑤ Repeat for opposite side. (Install Stopper Base & Sub Stopper) (PHOTO 2.5)



PHOTO 2.5

NOTE: Be careful to not get injured by the screws, for wiring, underneath the rolling base. (Two pieces on leftside of board.) (PHOTO 2.6)

SCREWS FOR WIRING

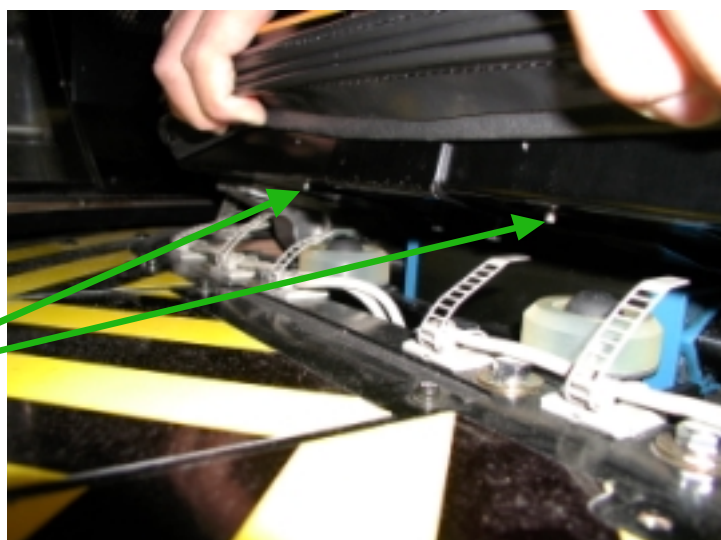
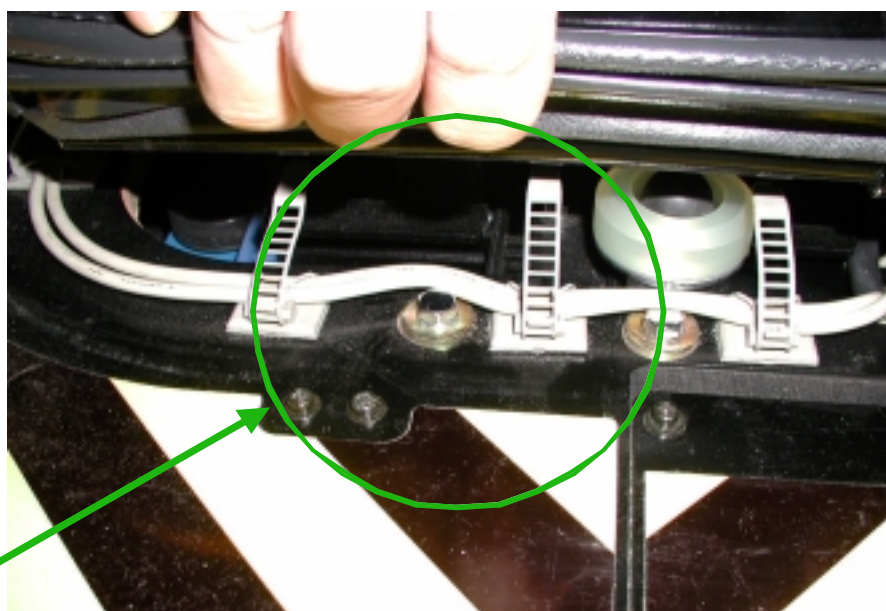


PHOTO 2.6

⑥ Route wire harness as pictured to avoid problems. (PHOTO 2.7)

Keep the wireharness away from the screw head.



⑦ Reinstall all items removed by reverse.

PHOTO 2.7